

APA VOICE VOTER GUIDE

ASIAN PACIFIC AMERICANS VOTING & ORGANIZING TO INCREASE CIVIC ENGAGEMENT

提供中文 · 이 유권자 안내서는 한국어로도 제공됩니다 · পাওয়া যাচ্ছে বাংলায় · नेपाली भाषामा उपलब्ध छ

APA Voice New York

TWO IMPORTANT ELECTIONS ARE COMING UP! WILL YOU BE VOTING THIS YEAR?

WHO IS ON THE BALLOT?

This year, many state-level positions, such as Governor, Lt. Governor, Comptroller, Attorney General, State Senator, and State Assemblyperson, are up for re-election. **Do you know what these elected officials can do and how they can influence your everyday life?**

1. WHICH OF THE FOLLOWING ACCURATELY DESCRIBES THE ROLE OF THE GOVERNOR OF NEW YORK?

- A: Controls funding for the MTA, which manages all the subways and buses of New York City
- B: Approves the state's yearly multi-billion dollar budget, which reflects the governor's priorities
- C: Is New York's most influential politician on issues such as fair taxation, education funding, government corruption, real estate regulations, environmental protections, and more
- D: All of the above

ANSWER: D

The Governor of New York has the duty to enforce state laws, the power to either approve or veto bills passed by the New York State Legislature. The Governor is also influential in determining the state budget and funding for the MTA and New York schools.

2. WHICH OF THE FOLLOWING ACCURATELY DESCRIBES THE ROLE OF LIEUTENANT GOVERNOR?

- A: Acts as the President of the State Senate and can cast tie-breaking votes
- B: Assumes the position of Governor in the case of disability, death, resignation, or impeachment
- C: Leads tasks force and performs other duties as directed by the Governor
- D: All of the above

ANSWER: D

The Lieutenant Governor is the President of the State Senate, and may also serve as Acting Governor in the absence of the Governor from the state.

3. WHICH OF THE FOLLOWING ACCURATELY DESCRIBES THE ROLE OF THE ATTORNEY GENERAL OF NEW YORK?

- A: As the state's top lawyer and criminal prosecutor, investigates and prosecutes civil rights violations, business fraud, and corruption cases
- B: Provides legal counsel to state agencies
- C: Can sue the president's administration on behalf of New York State
- D: All of the above

ANSWER: D

The Attorney General of New York, or the "People's Lawyer," is the chief law enforcement officer of the state and the head of the New York state government's Department of Law. The Attorney General is tasked with protecting the rights of New Yorkers, its organizations, and its natural resources by advising the state executive branch, handling criminal appeals and statewide criminal prosecutions, and legally defending actions and proceedings on behalf of the state.

4. WHICH OF THE FOLLOWING ACCURATELY DESCRIBES THE ROLE OF THE COMPTROLLER OF NEW YORK?

- A: Administers the New York State and Local Retirement System for public employees
- B: Manages the state accounting system and the state's pension fund
- C: Acts as the chief financial officer of the state government
- D: All of the above

ANSWER: D

The Comptroller of New York is the chief financial officer of the state government, and is responsible for managing the state accounting system and the state's pension fund. The Comptroller also controls the New York State and Local Retirement System for public employees.

Dear Friend,

APA VOICE believes in a country and a New York State where all people are welcome, treated fairly, and given the chance to achieve their dreams. During this politically divisive time, it is important to make your voice heard on important issues that directly impact our lives.

For numerous state and federal positions, this is an important election year. This guide includes important election dates and information the roles of different elected officials running for office.

Elected officials and candidates are more likely to address issues impacting communities with high voter turnout. Voting ensures that our elected officials remain accountable to our communities and on issues affecting our families and communities. We vote for our youth who are still too young to vote. We vote for our neighbors who are not citizens. We vote for our collective future.

Sincerely,

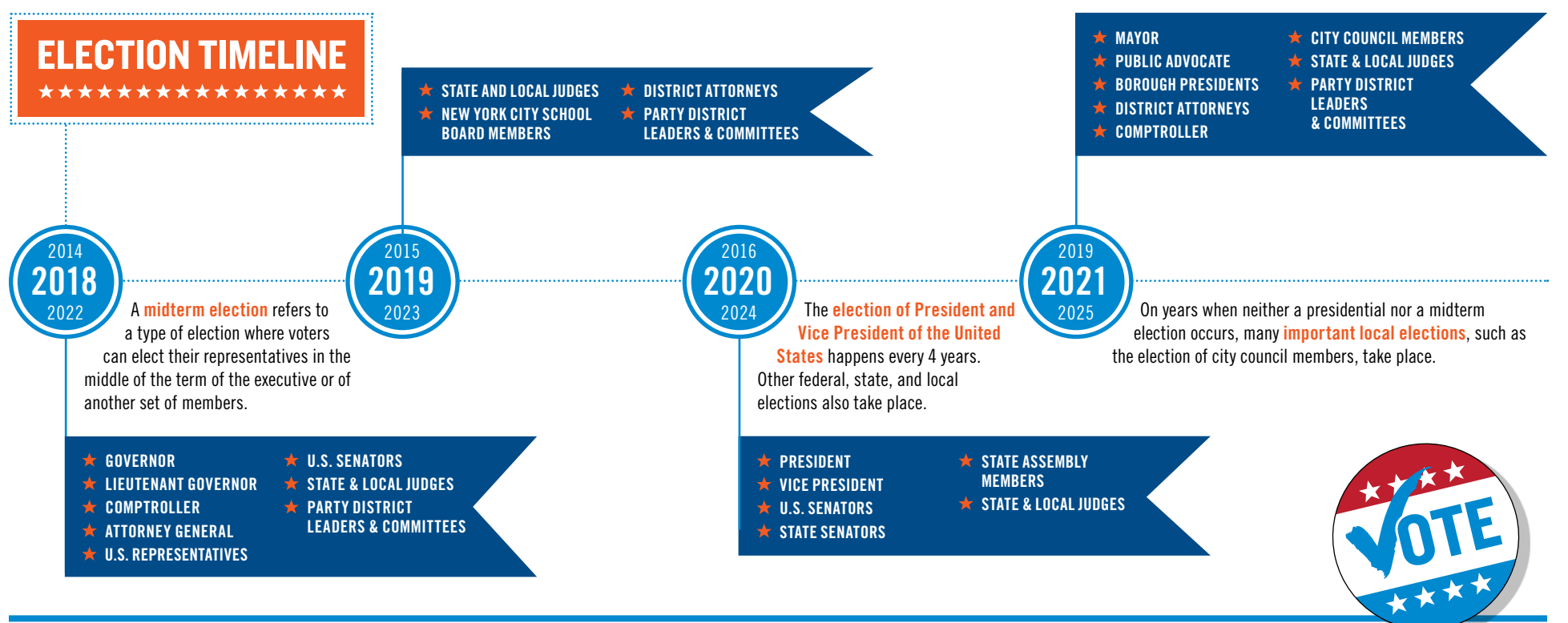
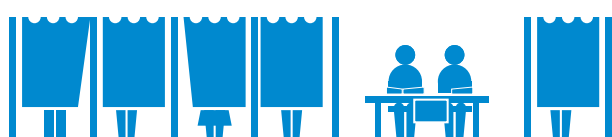
APA VOICE

5. WHAT IS THE ROLE OF THE 63-SEAT STATE SENATE AND 150-SEAT STATE ASSEMBLY OF NEW YORK?

- A: Proposes and passes new laws
- B: Votes on the state budget
- C: Acts as advocates for residents of their district
- D: All of the above

ANSWER: D

The New York State Assembly is the lower chamber of the New York State Legislature (the New York State Senate is the Legislature's upper chamber). The State Assembly and State Senate work alongside the Governor of New York to create laws, establish the state budget, raise and lower taxes, and pass bills on public policy matters.



IF YOU HAVE ANY QUESTIONS OR FACE ANY PROBLEMS ON ELECTION DAY, YOU CAN CALL:

English	718-460-5600	Korean	718-460-5600
Chinese	718-232-0055	Bengali	718-478-3848
	212-274-1891	Nepalese	718-937-1117

This voter guide is part of a campaign by APA VOICE: Voting and Organizing to Increase Civic Engagement. Our goal is to increase awareness and civic participation in the Asian Pacific American community. We are non-partisan and do not support any political party or candidate.

★★★★★ 2018 ELECTIONS CALENDAR

	PRIMARIES NEW YORK STATE	GENERAL ELECTION U.S. AND NEW YORK STATE
ELECTION DAY	THURSDAY, SEPTEMBER 13, 2018	TUESDAY, NOVEMBER 6, 2018
POSITIONS UP FOR ELECTION	Governor, Lieutenant Governor, Comptroller, Attorney General ALL 150 State Assembly Members ALL 63 State Senate	Senate, House, and statewide positions
DEADLINE FOR FIRST TIME VOTERS TO REGISTER TO VOTE	August 19, 2018	October 12, 2018
DEADLINE TO REQUEST AN ABSENTEE BALLOT	September 6, 2018	October 30, 2018

WHY PRIMARY ELECTIONS MATTER

- ★ **There are TWO primary elections in New York in 2018.** Often in New York, the primary election is the “real” election and competition is fiercest at this stage in the electoral process.
- ★ **A primary election decides who will be the candidates from each political party to run in the general elections.** Since New York is a “Closed Primary” state, only voters who are enrolled in a party can vote in primary elections. In most cases, only the major political parties—the Democratic or Republican parties—hold primary elections.



HOW DO YOU VOTE IN A PRIMARY ELECTION?

- ★ You **MUST** be enrolled in a political party to vote in that party's primary election
- ★ Enrolling in a political party is **NOT** the same as voting for a party. In the general elections, you may vote for any candidate you support.

VOTING: FREQUENTLY ASKED QUESTIONS

Q: HOW DO I REGISTER TO VOTE?

A: In order to be eligible to register to vote in New York, you must be a U.S. Citizen, 18 years old by the end of the year, living at your present address at least 30 days before an election, not be in prison or on parole for a felony conviction or adjudicated mentally incompetent by a court, and not claim the right to vote elsewhere. If you fulfill these requirements, you can register by:

- ★ **Calling or visiting any APA VOICE organization**
- ★ **Picking up a voter registration application from your local library or Board of Elections.**
- ★ **Downloading a form online:**
www.elections.ny.gov/VotingRegister.html
- ★ **Registering online with the DMV:**
www.dmv.ny.gov/mydmv/motv-pop.htm
- ★ **Calling the Board of Elections at 1-800-FOR-VOTE**

Q: WHERE DO I GO TO VOTE? WHAT DISTRICT DO I LIVE IN?

A: Your polling location and district depend on your home address. You can find where to vote and what district you live in online (<http://nyc.pollsitemlocator.com/search>) or you can call the Board of Elections (1-866-868-3692).

Q: WHO ARE MY ELECTED OFFICIALS?

A: You can find out who your elected officials at the federal, state, and city levels online at <http://gis.nyc.gov/doitt/nycitymap/>.

Q: I DON'T KNOW IF I'M REGISTERED TO VOTE.

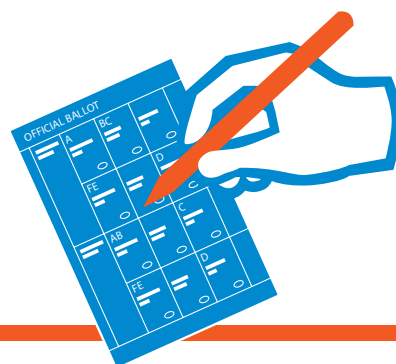
A: You can check if you're registered to vote online (<https://voterlookup.elections.state.ny.us/>) or call the Board of Elections (1-866-868-3692). See also the box to the right.

Q: WHAT IF I CHANGED MY NAME OR ADDRESS?

A: If you are changing your name or address, you must report it to the Board of Elections at least 20 days before the elections. You can do this by re-submitting a voter registration form

Q: WHAT SHOULD I BRING TO THE POLL SITE?

A: If this is your first time voting: Most voters provide a Social Security number or driver's license when registering to vote. If you did not, you need to bring proof of identification the first time you vote. If you voted before: You are not required to provide identification. However, it may be helpful to bring your registration card from the Board of Elections.



Q: WHAT IF I'M NOT ABLE TO MAKE IT TO THE POLL SITE ON THE ELECTION DAYS?

A: You can vote by an absentee ballot, which can be mailed or brought to the Board of Elections. You must have a valid reason to vote by absentee ballot in New York. Such reasons include if you will be traveling on Election Day, are unable to go to the poll site due to temporary or permanent illness or disability, or if you're the primary caregiver of one or more individuals who are ill or physically disabled.

To fill out an absentee ballot application, you can contact your nearest Board of Elections (1-866-868-3692) or download the application from <http://www.elections.ny.gov/VotingAbsentee.html>

Q: WHAT IF I NEED HELP AT A POLL SITE?

A: If you need help because you are disabled or cannot read the ballot, federal law allows you to have a friend or relative assist you in the privacy booth. There will also be election workers, and possibly interpreters, at the poll site to help you.

Q: CAN I CHANGE MY PARTY AFFILIATION?

A: If you are already registered to vote, and would like to change your party affiliation, you must complete a new voter registration form, marking a different choice for political party enrollment. However, you must wait for a general election to pass for the change to go into effect.

